



# **Quick Installation Guide**

## **Method Print-to-Fax Client**

The contents of this document remain the property of, and may not be reproduced in whole or in part without the express permission of Method.

# Table of Content

1. Overview .....	3
2. Download the Program.....	4
3. Redirection Port Monitor Setup .....	5
4. Method Print-to-Fax Configuration.....	7
5. Printer Setup and Configuration (Windows® 2000/XP) .....	10
6. Printer Setup and Configuration (Windows® 98/Me) .....	20
7. Testing the Program .....	30

## 1. Overview

Method Print-to-Fax client allows Windows® user to fax any type of documents through Method Server to other fax machines.

Before you start installing Method Print-to-Fax client, you have to check the following conditions have been met and fulfilled:

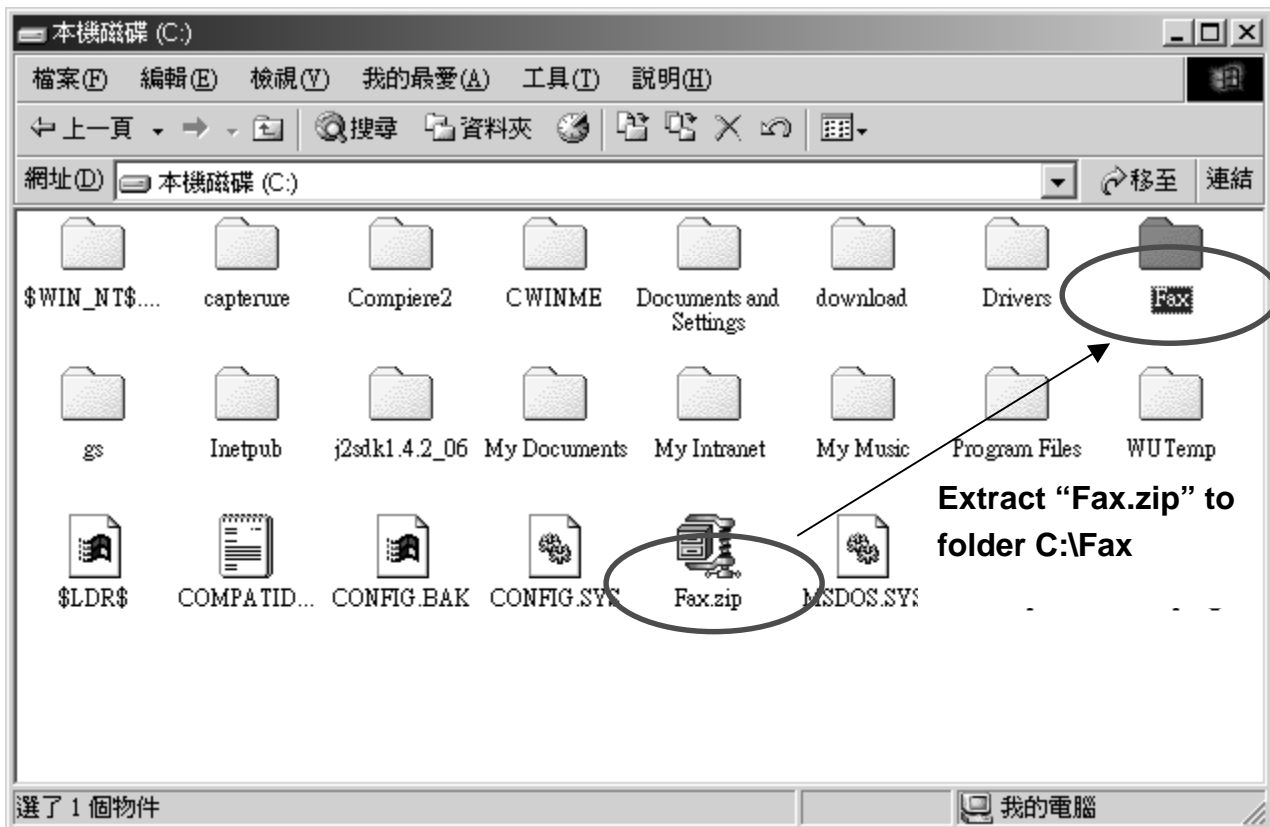
- Method Server with known domain name or IP address is running
- Your computer is running on Windows® platform 98/Me/2000/XP
- Have **WinZip** installed. If you have not installed yet, please visit <http://www.winzip.com> to download the evaluation version. Follow the instructions to install the program.

## 2. Download the Program

Go to <http://www.method.hk/linux/download/download.html> to download Method Print-to-Fax Client program, called **“Fax.zip”**. Save this file to **“C:”**.

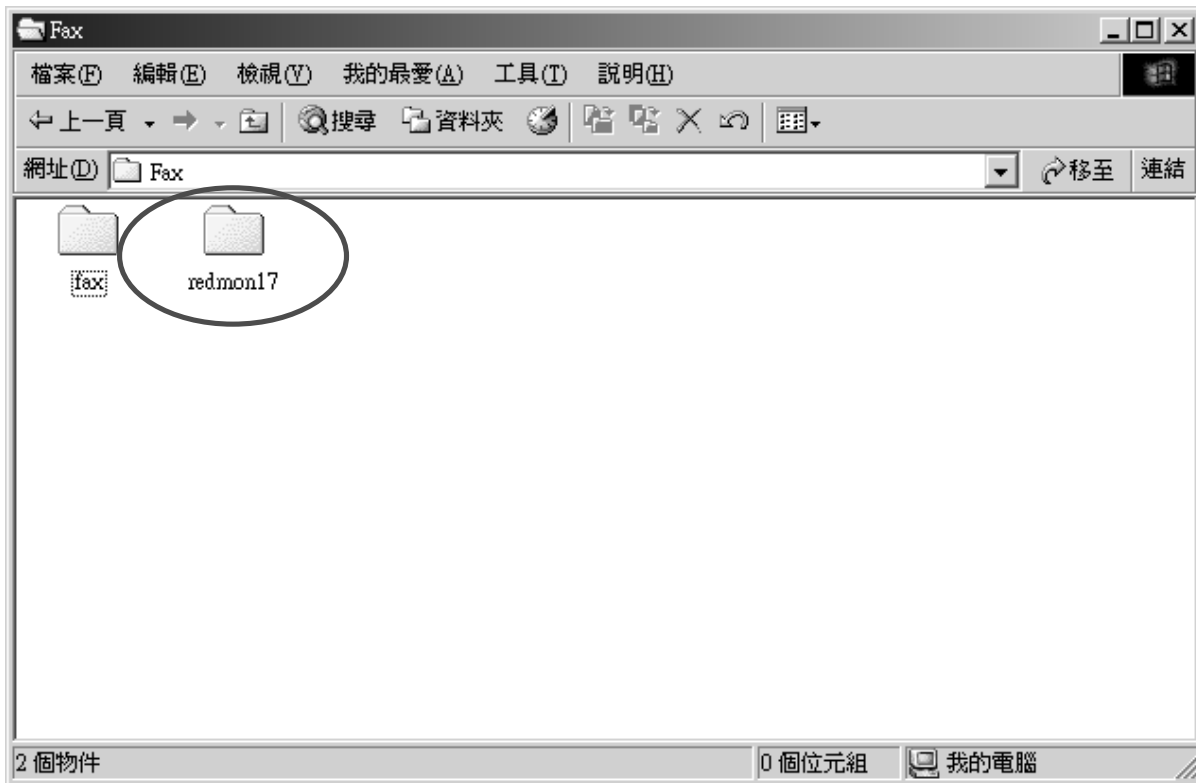


Use WinZip to extract **“Fax.zip”** to folder **“C:\Fax”**.



### 3. Redirection Port Monitor Setup

Go into folder “C:\Fax”. Go into folder “redmon17”.



Double-click “**setup.exe**” icon.



Click “yes”.



An “Installation Successful” window will be displayed.

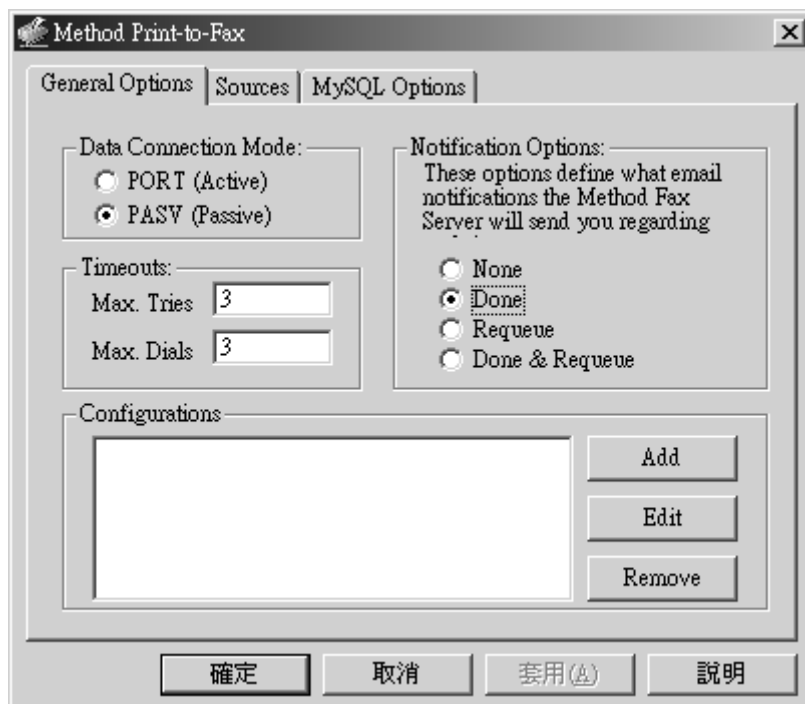


## 4. Method Print-to-Fax Configuration

Go to folder “C:\Fax\fax”. Double-click the “fax.exe” program file.



You will see the following window.



Click “Add” button. You will see the following window.



Enter the correct information to each entry. You need to supply the following information:

- Configuration: **Method Server**
- FAX Server: **server name/ IP address**
- Port: **4559**
- Choose the “I must logon to fax server”
- Username: **Fax Server Username**
- Password: **Password associated with your username**
- Your Name: **your own name**
- Email address: **the email address to notify your about the status of fax job**

An example is shown below:



Click “OK” to quit this window.



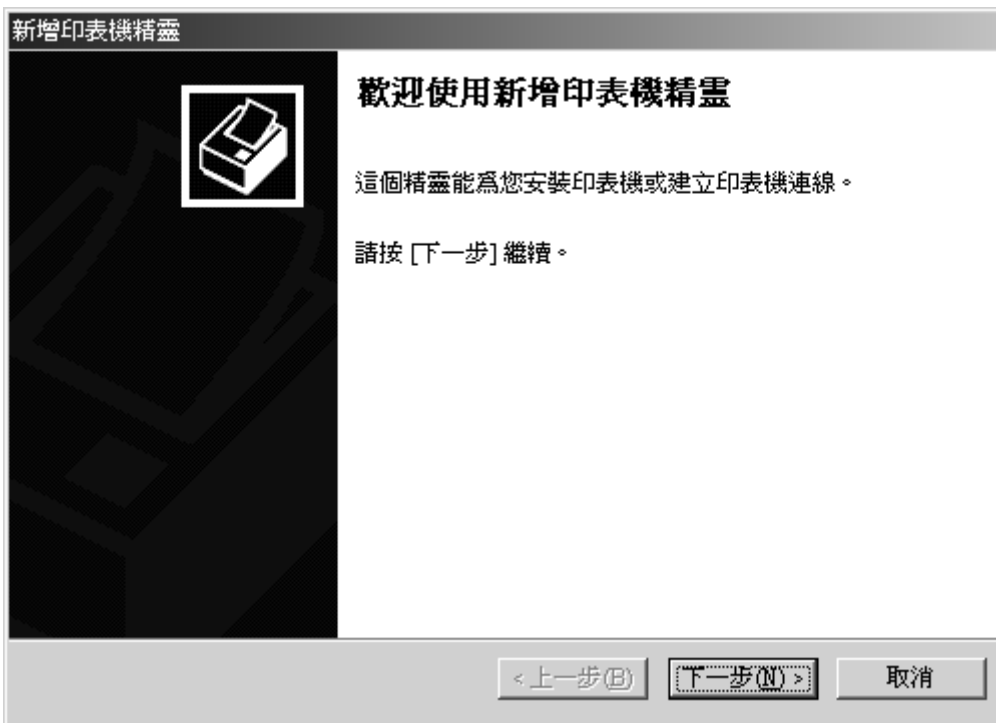
Click the “Source” tab. Choose the square box “Other Contact”.



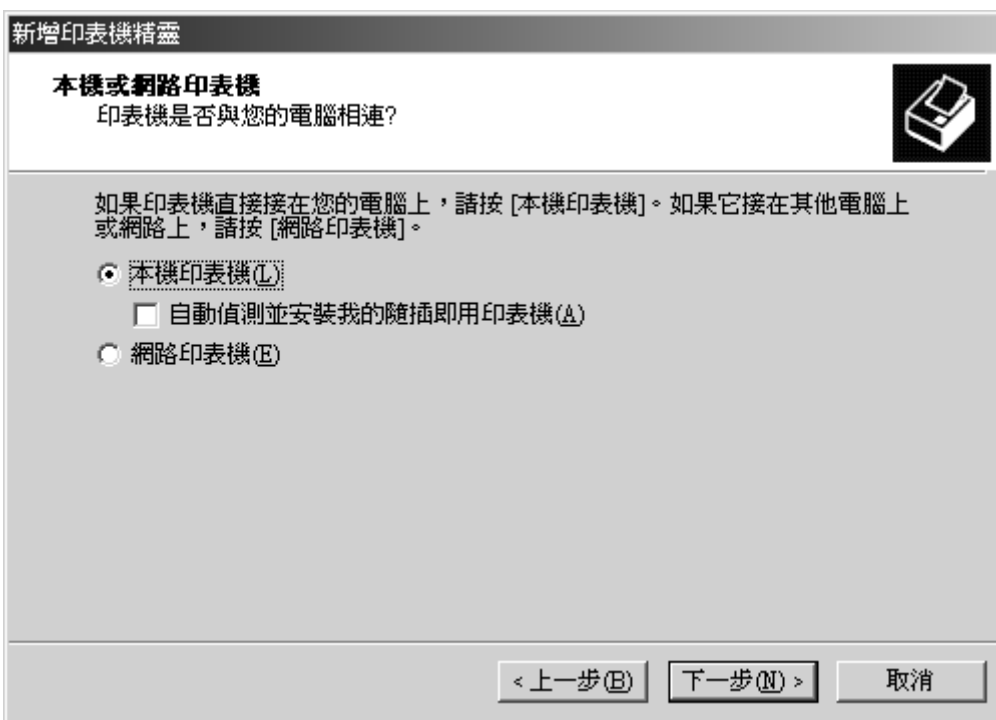
Click “OK” to quit the configuration window.

## 5. Printer Setup and Configuration (Windows® 2000/XP)

Click into “Control Panel-> Printer-> Add New Printer”.




Click “Next”.



Click "Next".

新增印表機精靈

**本機或網路印表機**  
印表機是否與您的電腦相連?



如果印表機直接接在您的電腦上，請按 [本機印表機]。如果它接在其他電腦上或網路上，請按 [網路印表機]。


本機印表機(L)  
 自動偵測並安裝我的隨插即用印表機(A)  
 網路印表機(E)

< 上一步(B)    下一步(N) >    取消

Choose "Add New Port". Choose type "Redirected Port".

新增印表機精靈

**選取印表機連接埠**  
電腦和印表機透過連接埠溝通。



請選擇您想讓印表機使用的連接埠。如果未列出該連接埠，您可以建立新的連接埠。

使用下列的連接埠(U):

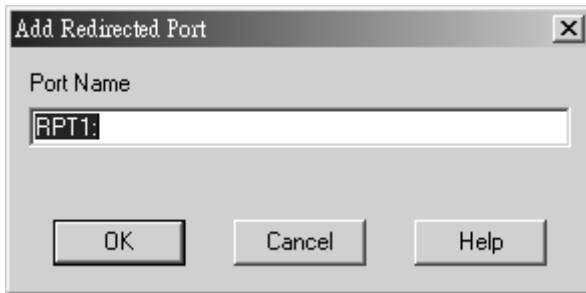
連接埠	描述	印表機
LPT1:	印表機連接埠	
LPT2:	印表機連接埠	
LPT3:	印表機連接埠	
COM1:	序列連接埠	
COM2:	序列連接埠	
COM3:	序列連接埠	

注意事項: 大部分的電腦使用 LPT1: 連接埠來與本機印表機通訊。

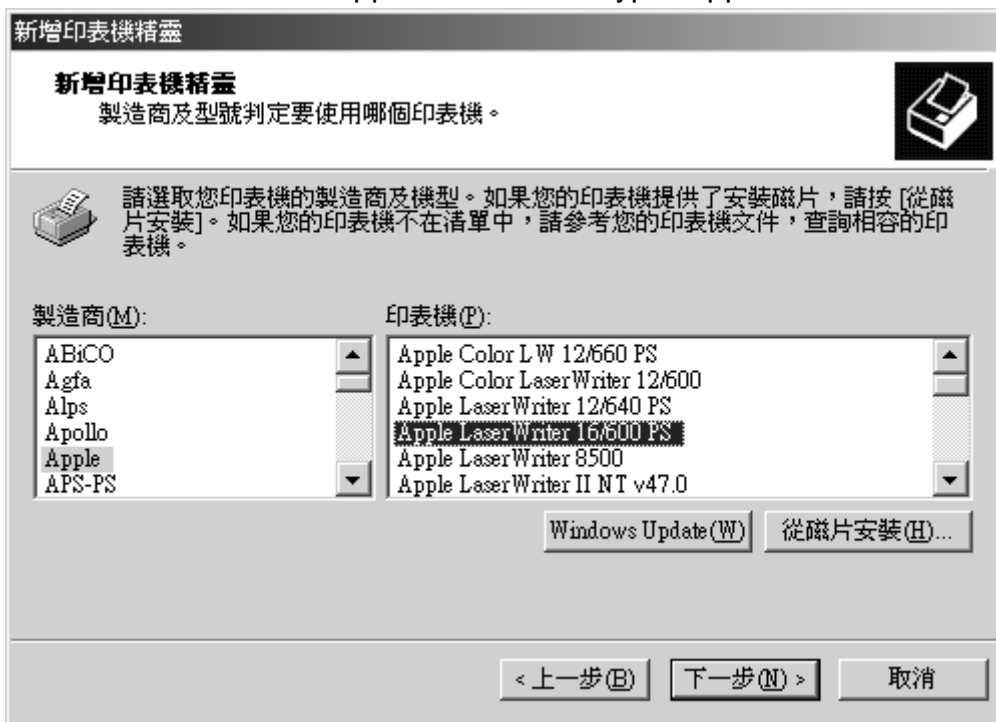
建立新的連接埠(C):  
類型: Redirected Port

< 上一步(B)    下一步(N) >    取消

Click "OK".




Choose Manufacturer "Apple" and Printer Type "Apple LaserWriter 16/600PS". Click "Next".



Rename the printer as "Fax Printer". Click "Next".

新增印表機精靈

**為您的印表機命名**  
您必須為這個印表機指定一個名稱。



請提供印表機名稱。某些應用程式不支援超過 31 個字元的伺服器名稱和印表機名稱組合。

印表機名稱 (P):

您要將這台印表機設為 Windows 程式的預設印表機嗎?


是 (Y)  
 否 (N)

< 上一步 (B)    下一步 (N) >    取消

Click "Next".

新增印表機精靈

**印表機共用**  
您可以讓其他網路使用者共用這台印表機。

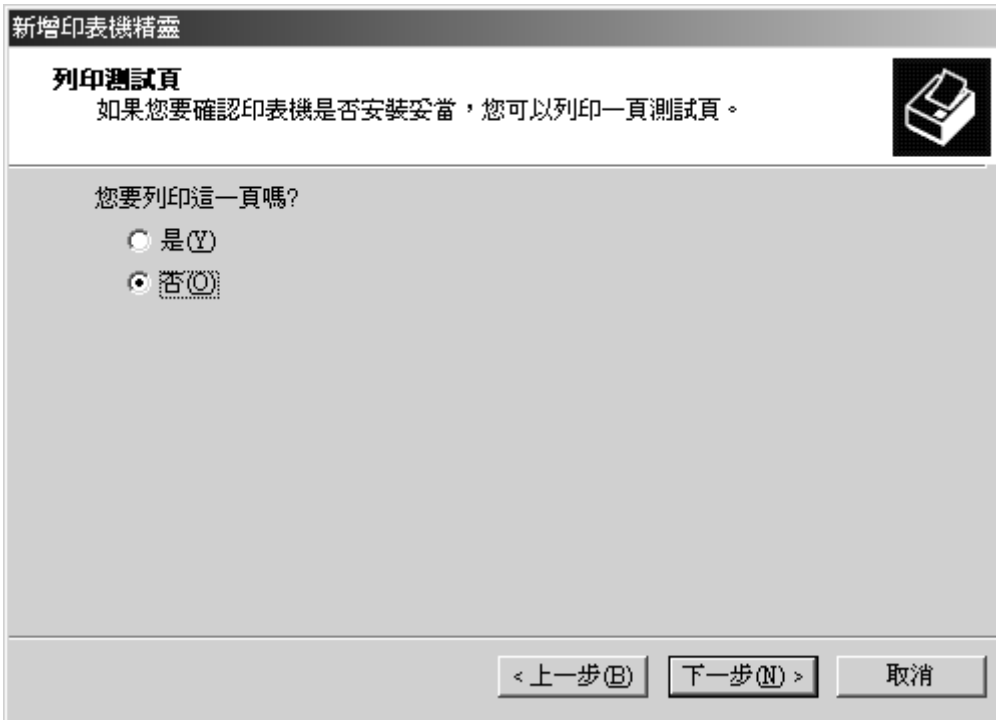


請表示您是否要與他人共用這部印表機。如果要共用的話，您必須提供共用名稱。

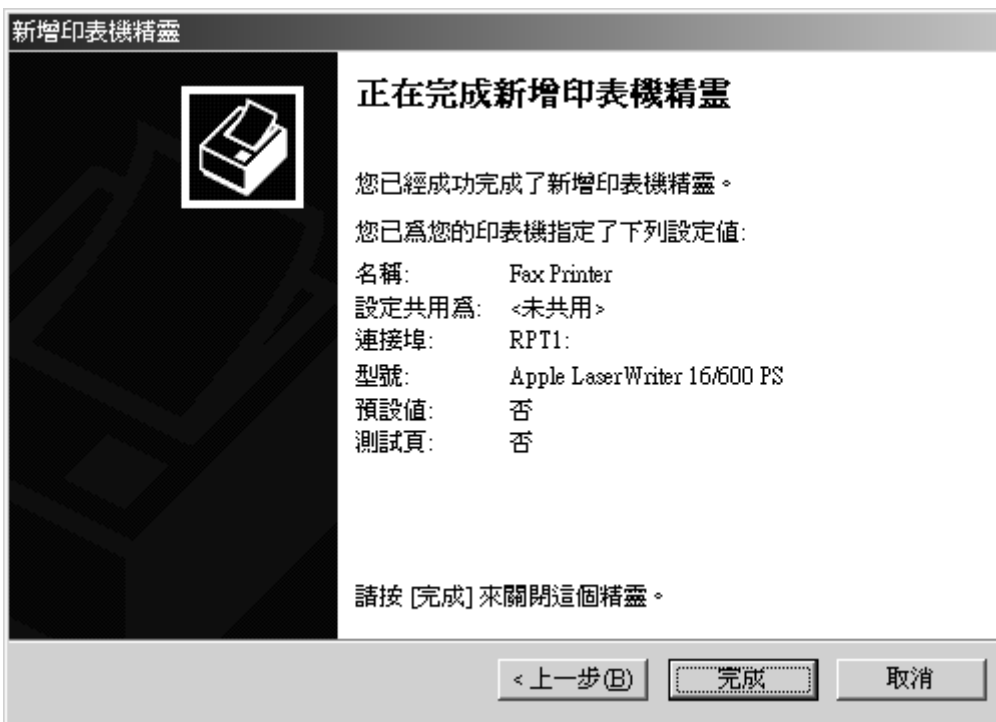
不共用印表機 (N)  
 設定共用為 (S):

< 上一步 (B)    下一步 (N) >    取消

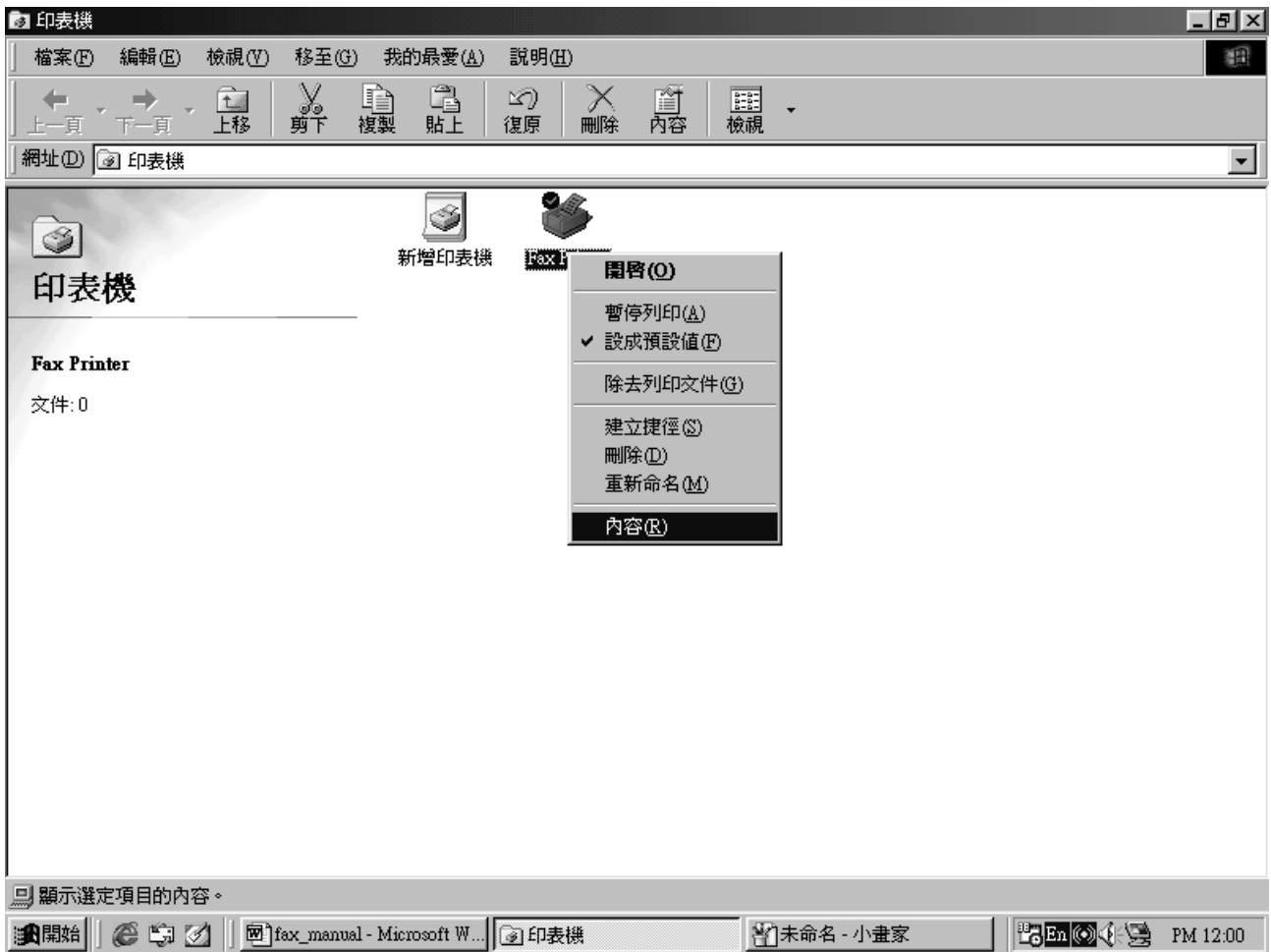
Click "Next".



Click "Finish".



After adding a new printer, you need to configure it by right-clicking the “Fax Printer” icon and choose “Properties”.

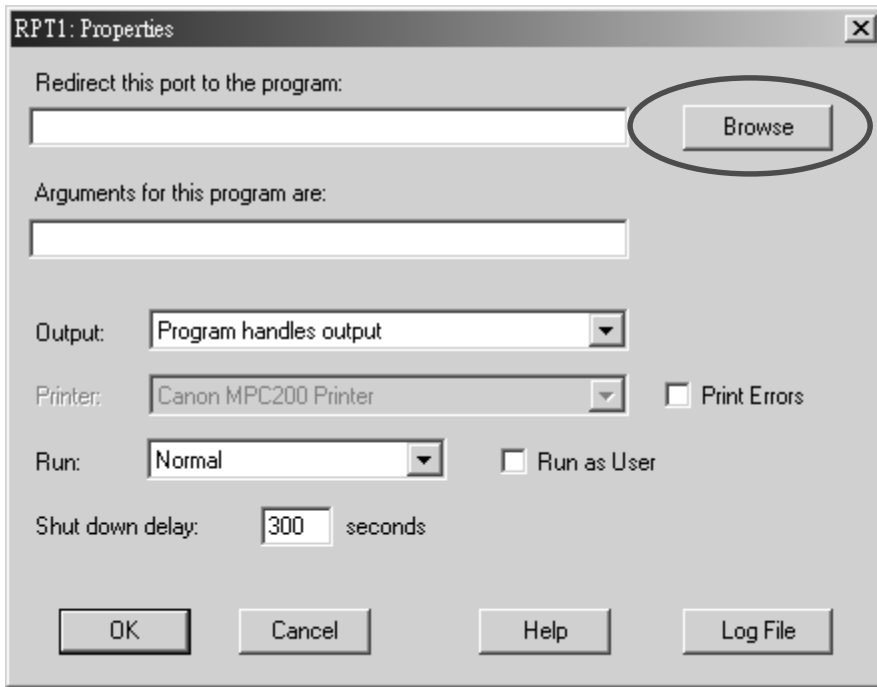


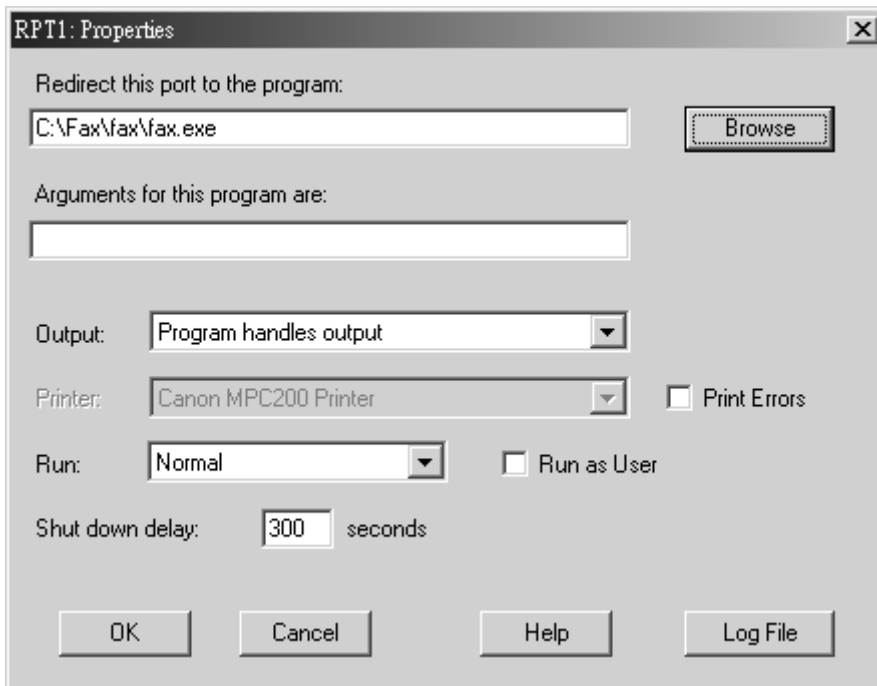
Enter “Port” tab, then click “configure port”.



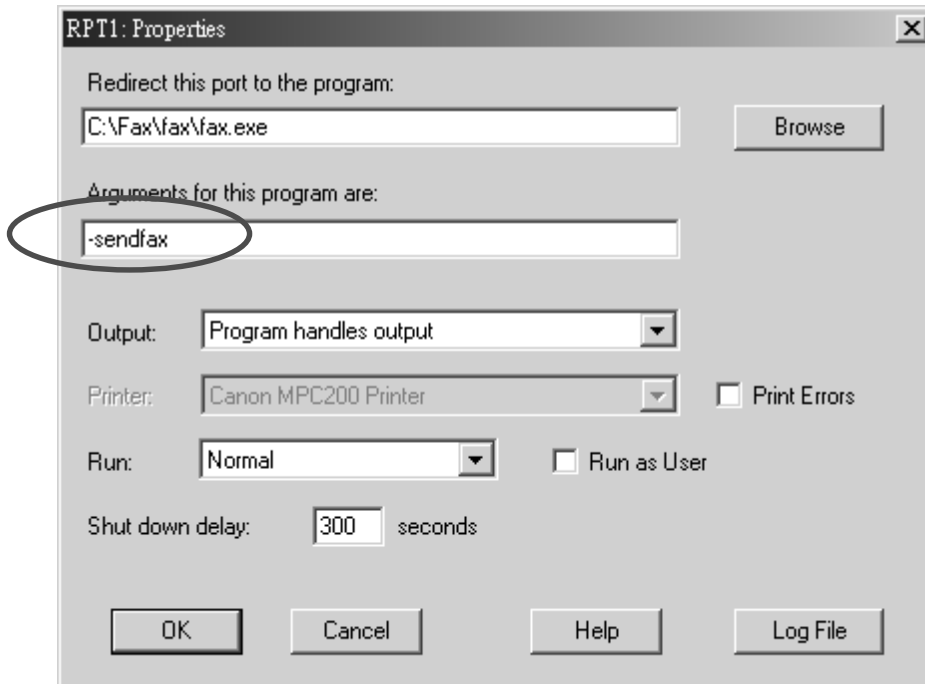


In the first entry, click “browse” button, then choose the program file “C:\Fax\fax\fax.exe”.

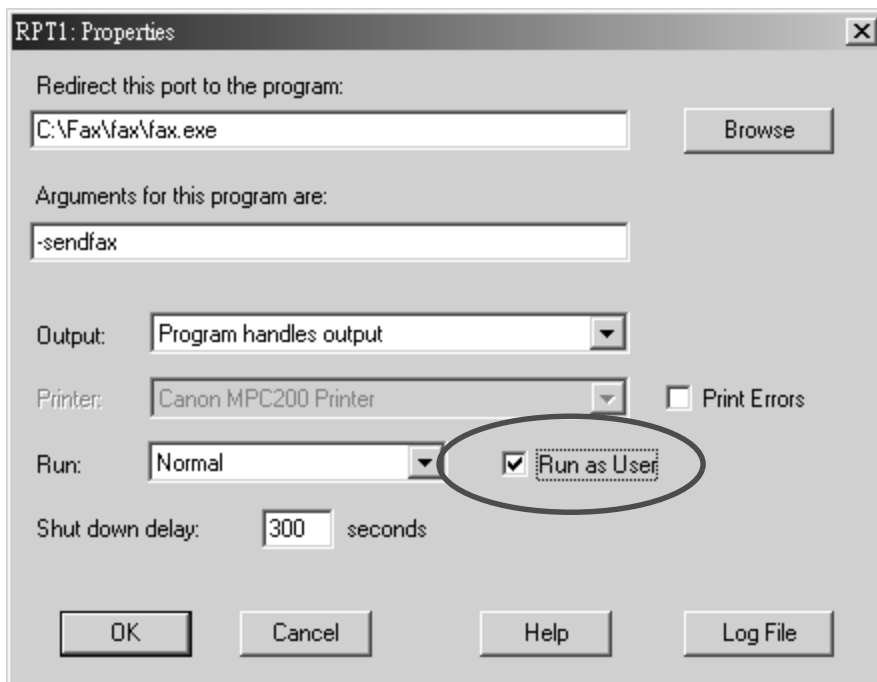




Enter “-sendfax” in the next entry.



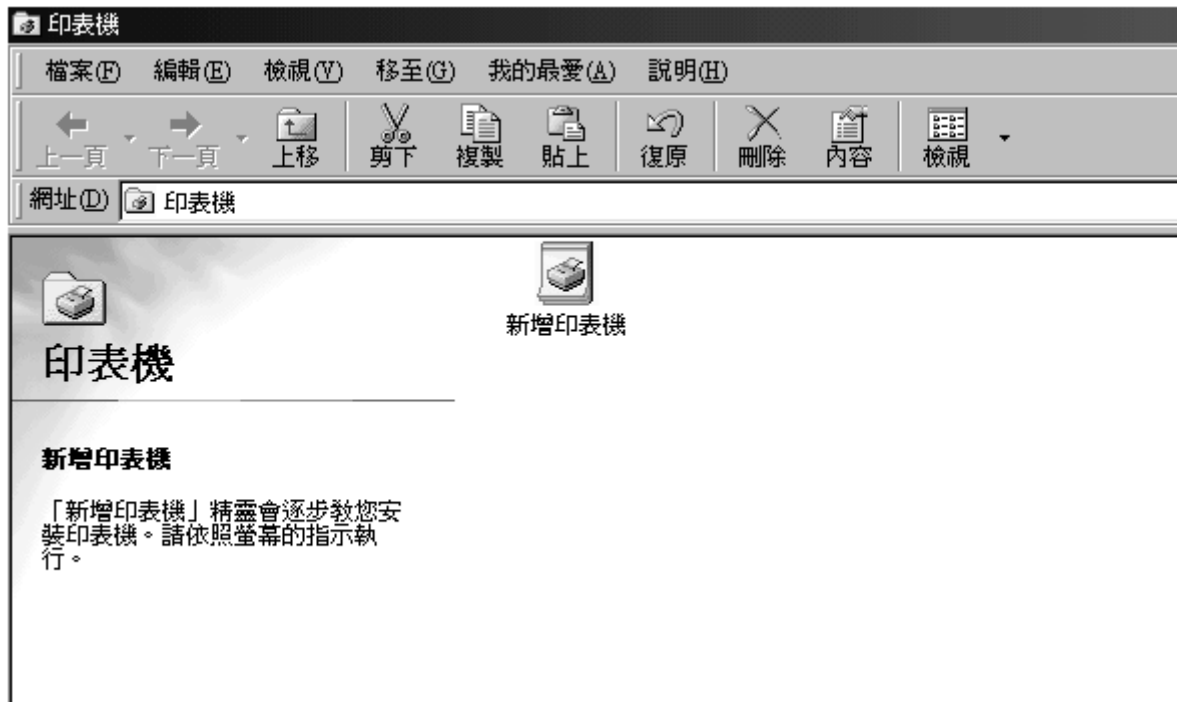
Click the square box left to “Run as User”. A tick will be shown in the square box.



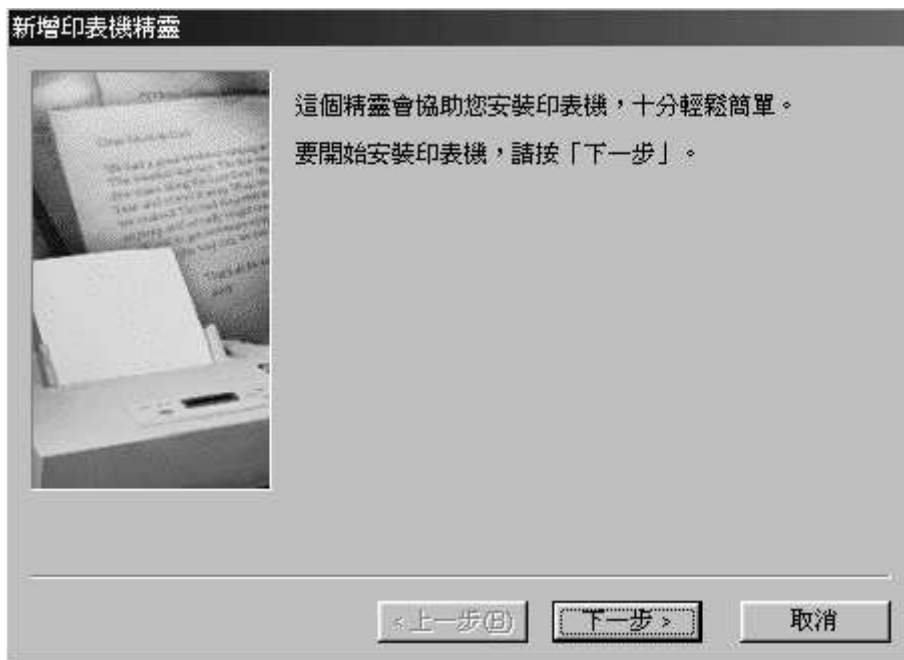
Click “OK” to quit this window. Click “Close” to close the “Properties” window for printer.

## 6. Printer Setup and Configuration (Windows® 98/Me)

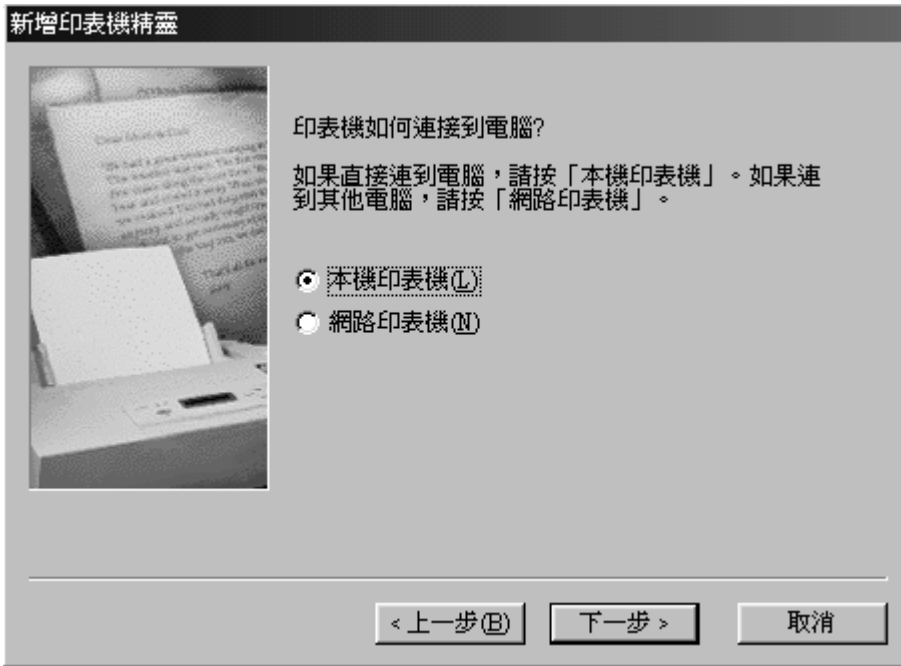
Enter “Control Panel->Printer” Section. Click “Add Printer” icon.



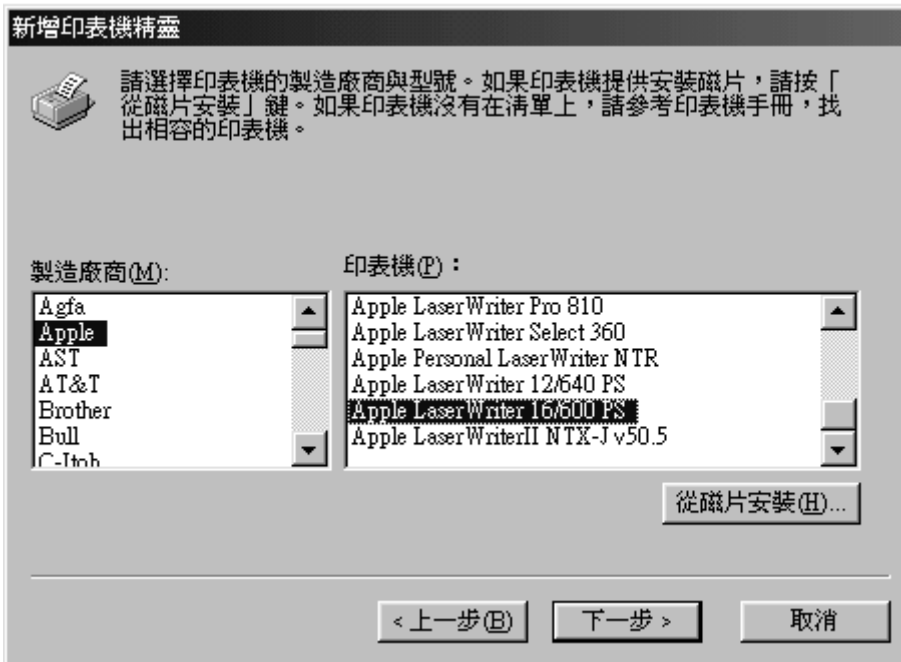
Click “Next” button.



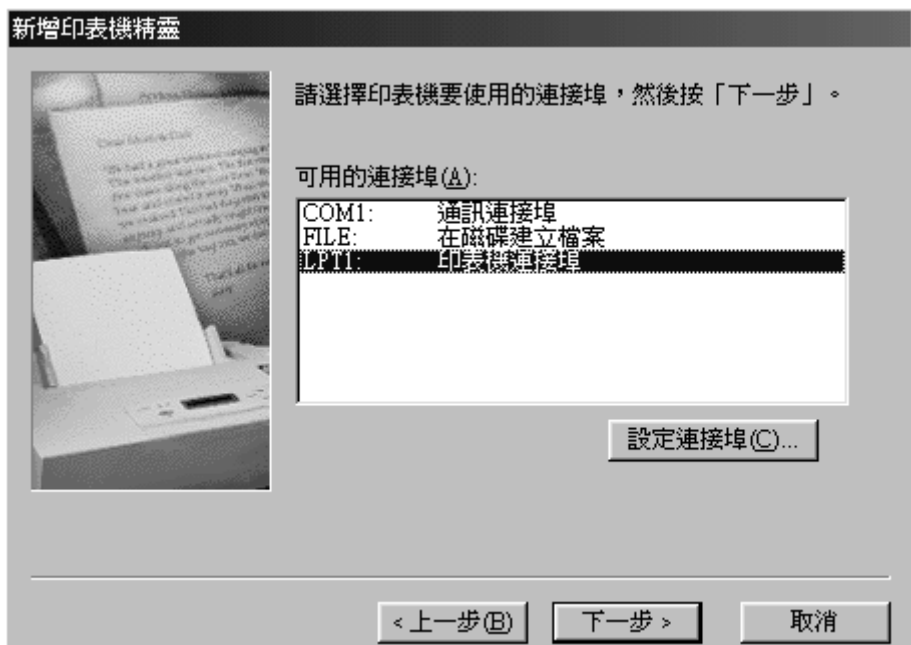
Click "Next" button.



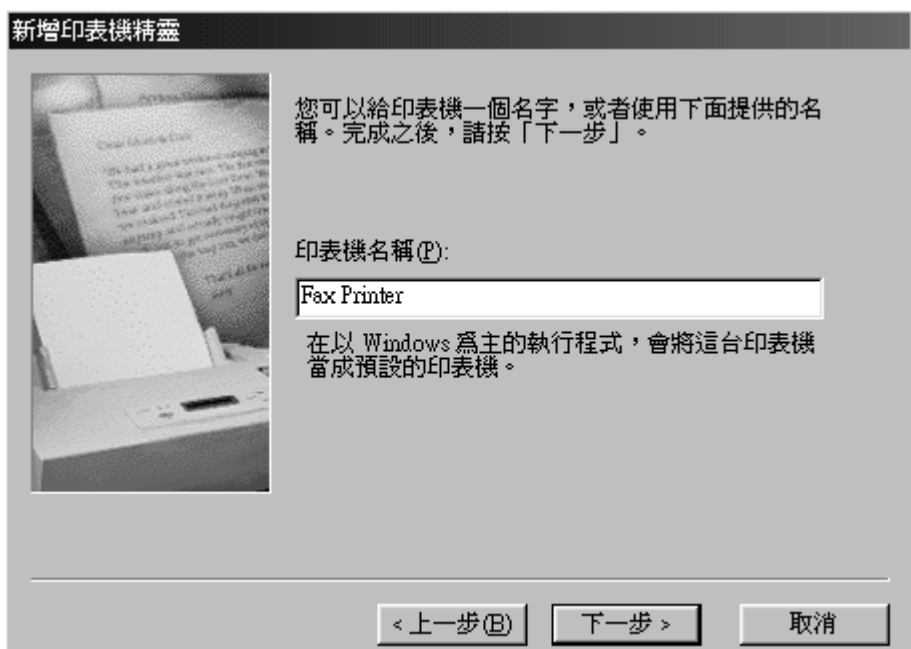
Choose Manufacturer "Apple" and Printer Type "Apple LaserWriter 16/600PS". Click "Next".



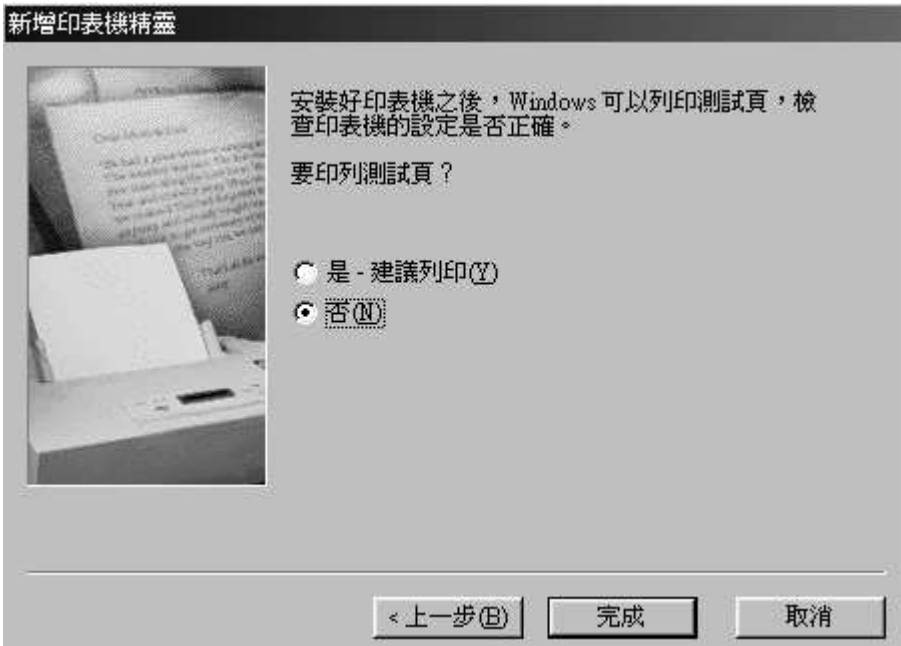
Click “Next” button.



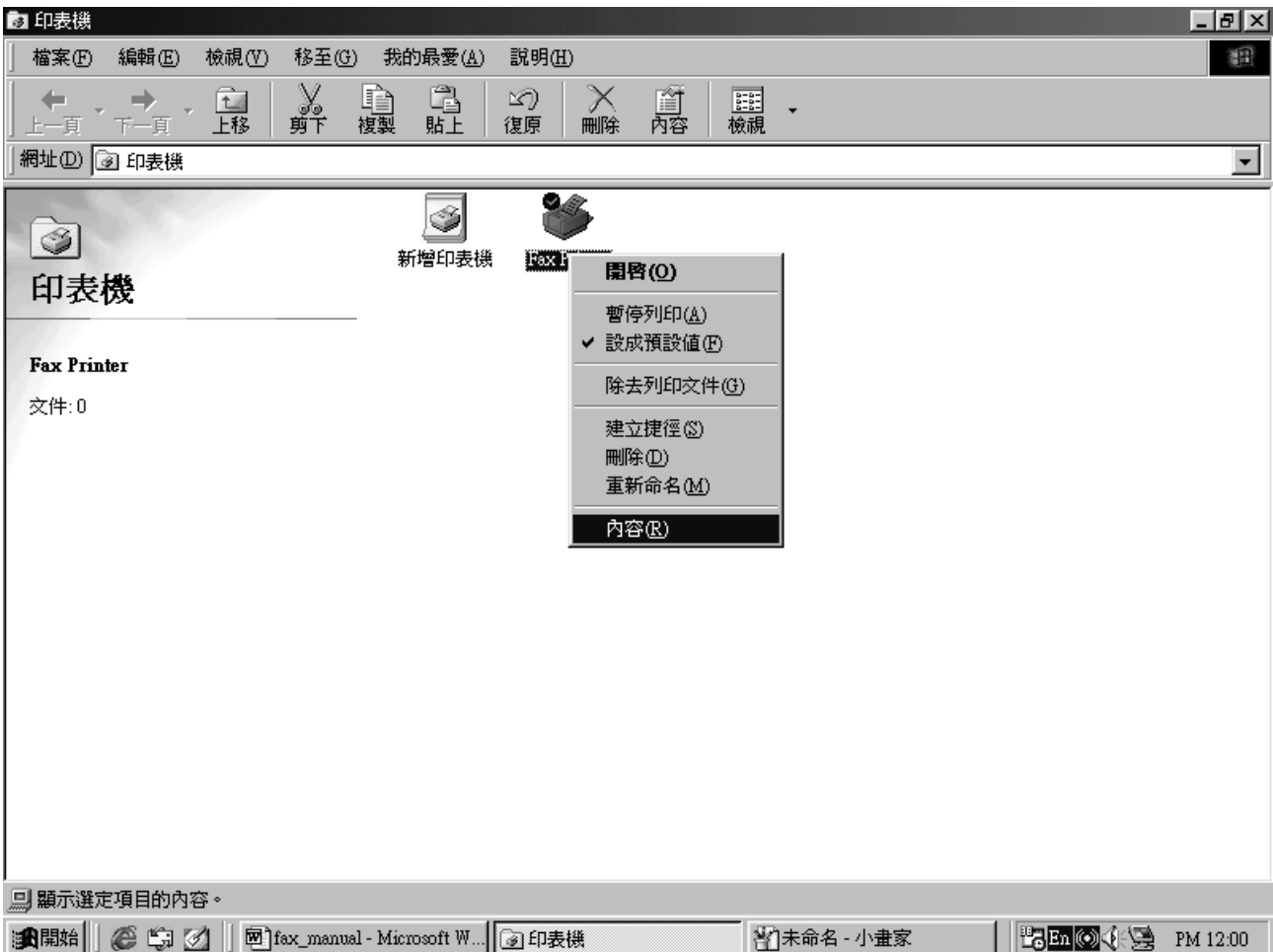
Rename the printer as “Fax Printer”. Click “Next”.



Choose “No” to disable the “Print Test Page”. Click “Finish” to quit printer setup.



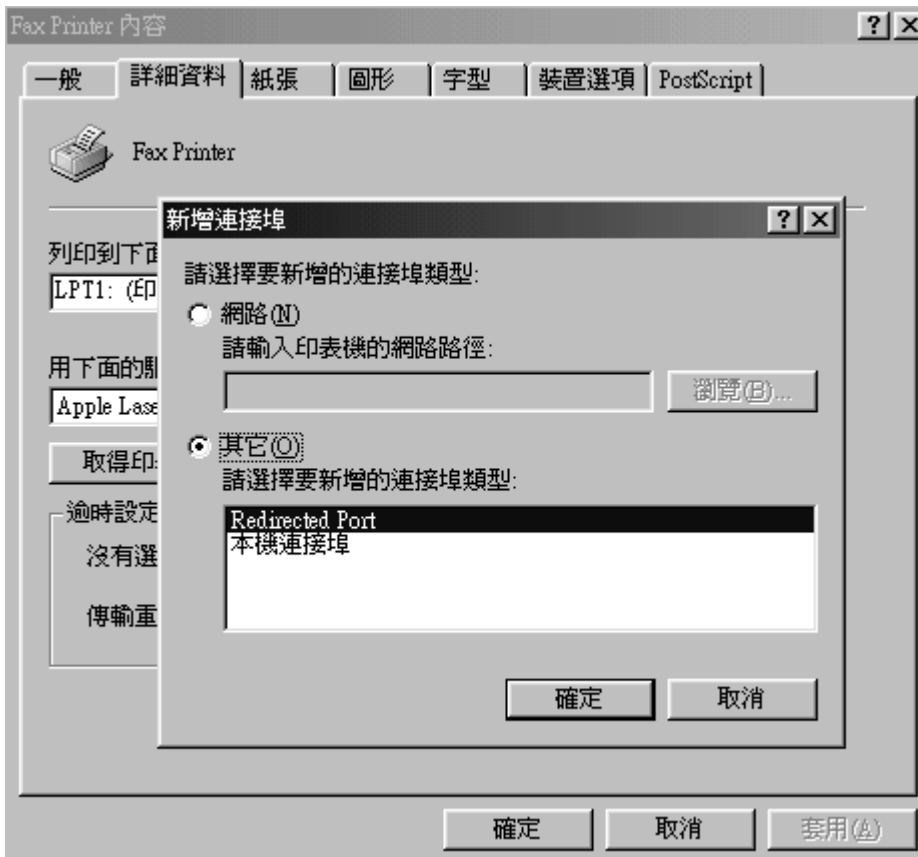
After adding a new printer, you need to configure it by right-clicking the “Fax Printer” icon and choose “Properties”.



Click “Details” tab. Click “Add New Port”.

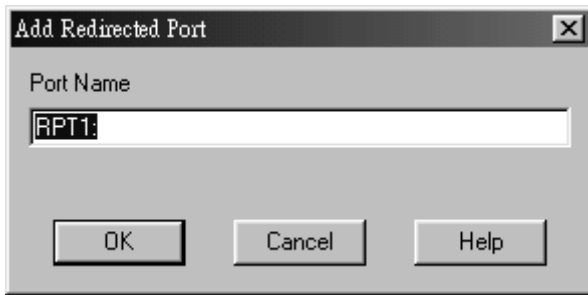


Choose “Others” option. Choose “Redirected Port” item in the list. Click “OK”.





Click “OK” to accept the default port name.



Choose “RPT1: (Redirected Port)” port in the drop-down list.



Click "Spool Setting" button.



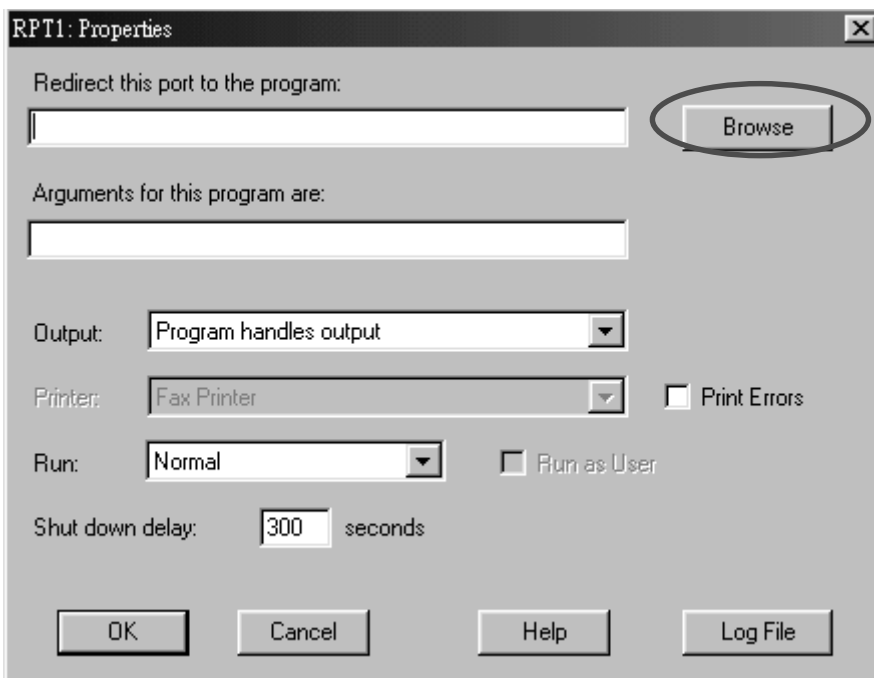
Choose "Disable Bi-directional Support for Printer" option. Click "OK".



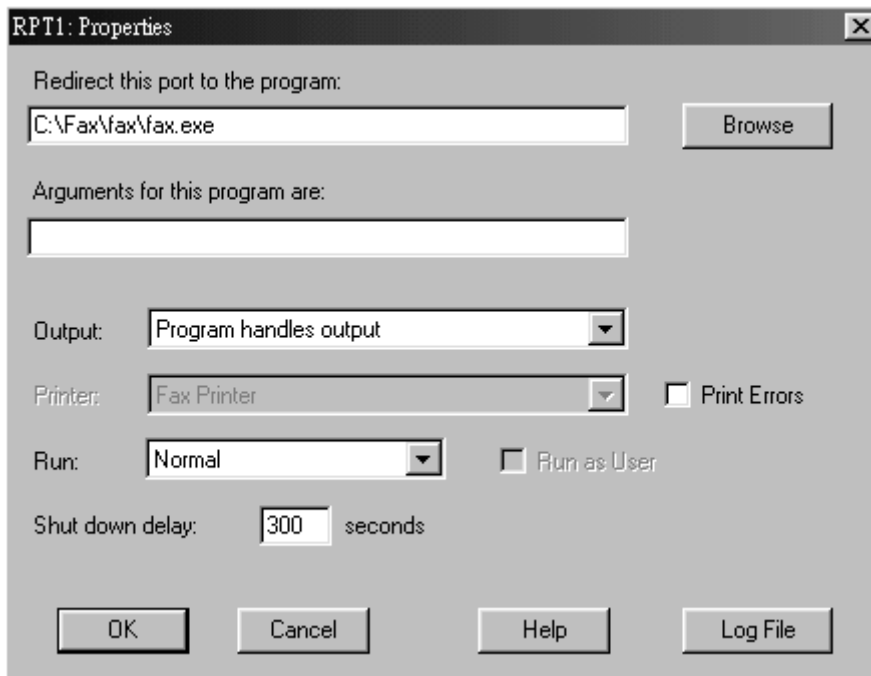
Click "Port Setting".



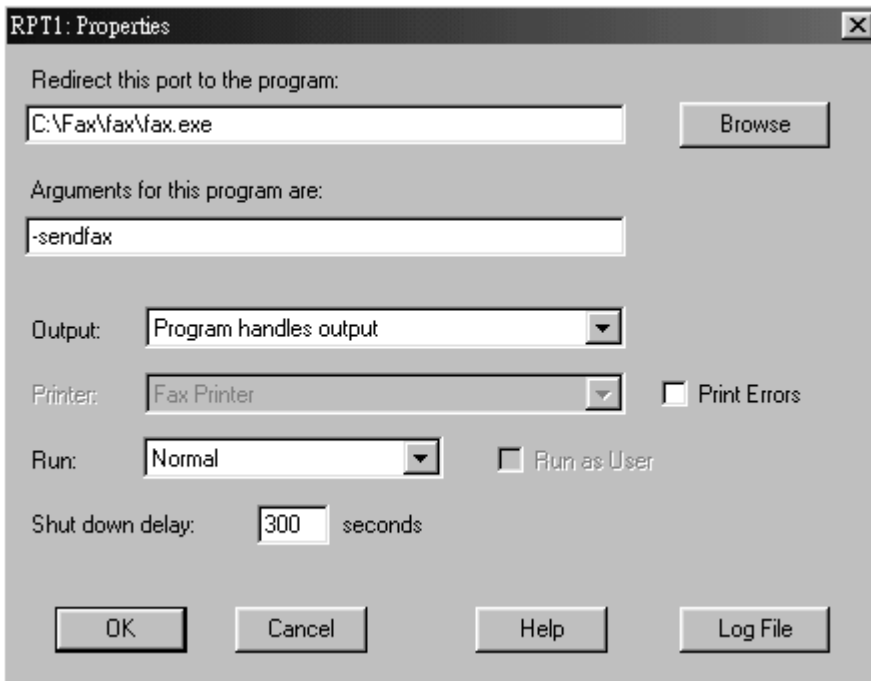
In the first entry, click "browse" button, then choose the program file "C:\Fax\fax\fax.exe".



In the first entry, click “browse” button, then choose the program file “C:\Fax\fax\fax.exe”.



Enter “-sendfax” in the next entry.



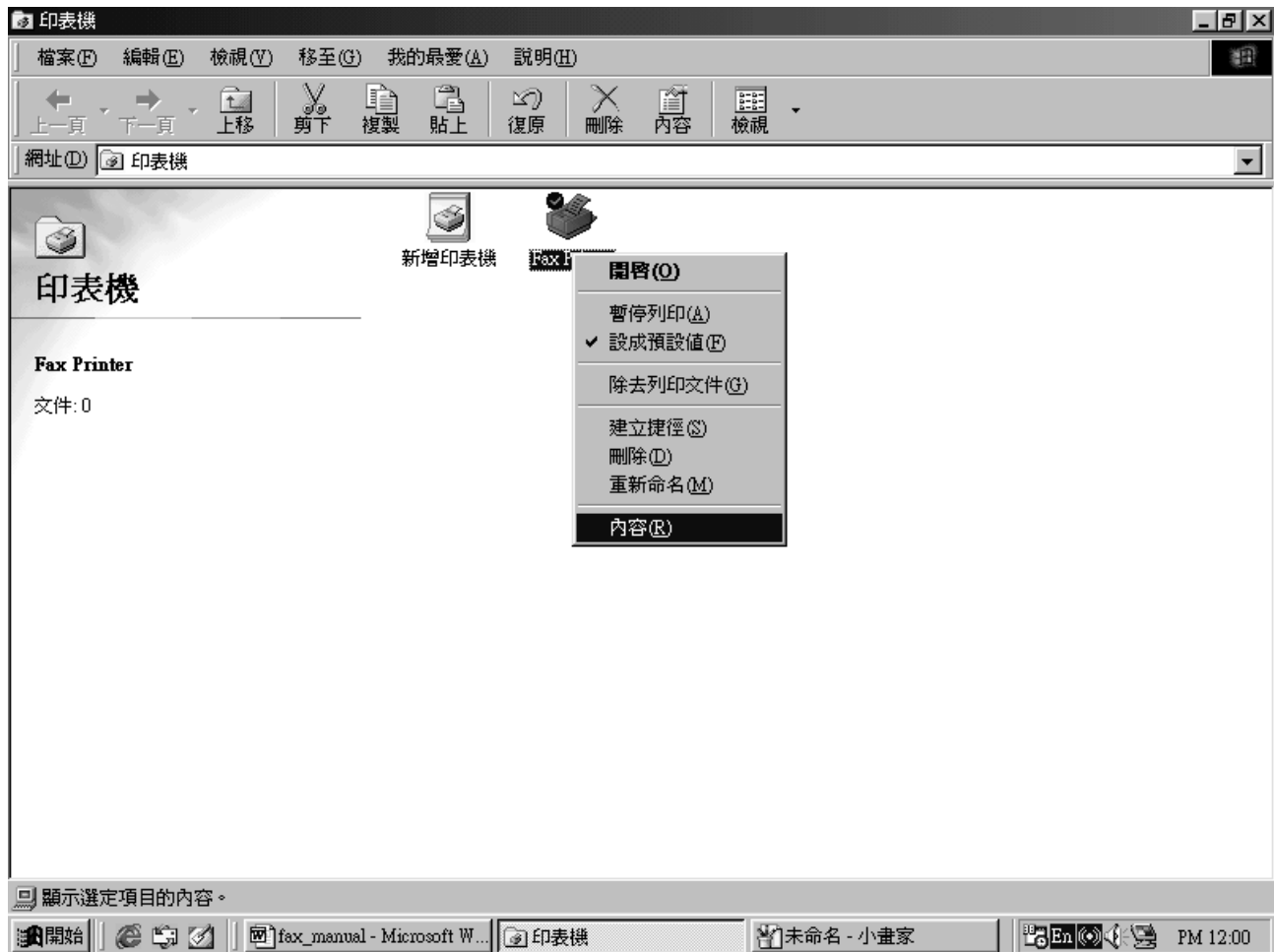
Click “OK” to confirm the setting.

Click “OK” to finish the setup.



## 7. Testing the Program

You are recommended to print a test page for testing the new configuration. Enter “Control Panel->Printer” Section. Right-click the “Fax Printer” icon and choose “Properties”.



Click “Print Test Page” button.



A “Method Print-to-Fax” Window appears. Select “Method Server” in drop down menu. Click “Next”.



A window "Method Print-to-Fax::Select Recipients" appears. Click the tab "Other Contact".

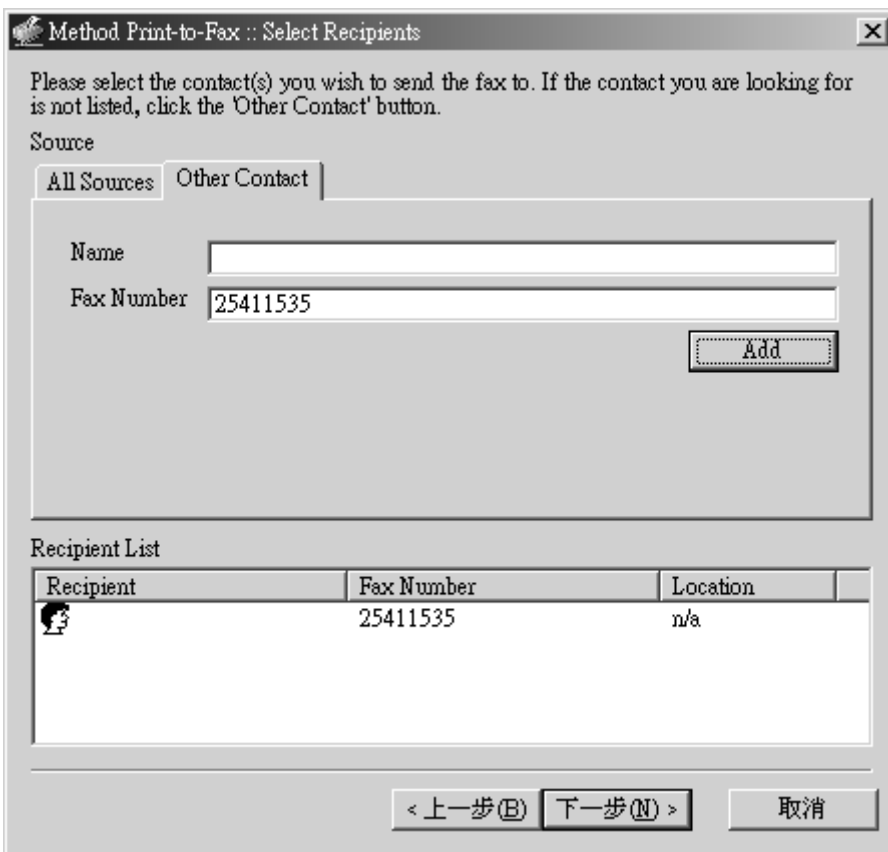


Enter the destination fax number in the "Fax Number entry. Click "Add" button.

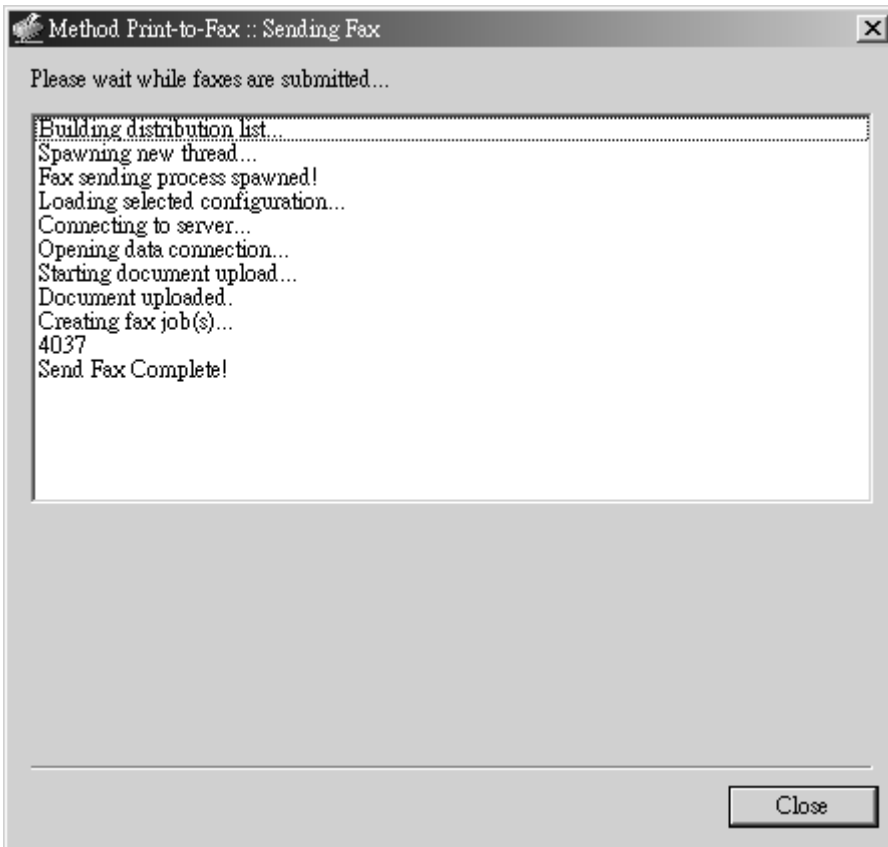




The destination fax number will appear in the “Recipient List” window below. [Note: You can add more than one destination fax number in this list.]



Click “Next” button. You will see the status message in the message window.



If the fax job is sent successfully, a line "Send Fax complete!" will appear at the end of the message window.

Click "Close" to finish the "Send Fax" job.

An email will be sent to your email account to notify you once the previous fax job has been transmitted to the destination.

主旨: facsimile job 4037 to 25411535 completed  
寄件者: "Facsimile Agent" <fax@method.zone.hk>  
日期: Thu, 三月 31, 2005 11:02 am  
收件者: alex@method.hk  
重要性: 普通  
環境設定: [顯示完整標頭](#) | [顯示友善列印模式](#)

Your facsimile job to 25411535 was completed successfully.

Pages: 1  
Quality: Fine  
Page Width: 0 (mm)  
Page Length: 0 (mm)  
Signal Rate: 14400 bit/s  
Data Format: 2-D MMR  
Submitted From: n220246021035.netvigator.com  
JobID: 4037  
GroupID: 4037  
CommID: c000005296

Processing time was 0:51.